

NCGS  
NEWSLETTER

THE NORTH CAROLINA GEOGRAPHICAL SOCIETY

SEPTEMBER, 1980

ANNUAL MEETING

October 10-11, 1980  
Boundary Tree Lodge, Cherokee, N.C.

HIGHLIGHTS OF MEETING:

Friday

Trout and Keg Feast, 7:00-9:00

Saturday

Program: Economic Development Strategy and Impacts in Cherokee  
Mr. Robert Evans, Economic Program Manager, Cherokee  
Indian Agency

Field Trip: Cherokee Indian Reservation

Wine and Cheese Social

Football Game: Western Carolina vs Citadel  
(Call 704-227-7338 for ticket information)

HOTEL INFORMATION:

Boundary Tree Lodge, P.O. Box 464, Cherokee, N.C. 28719  
One Person ..... \$28.00  
Two Persons ..... 31.00  
Each Additional Person ..... 5.00  
Cottage (sleep 5) ..... 40.00

Make Reservations Soon!

To register for meeting, please send check and form below by September 20.

Registration Fee - \$4.00 (includes Wine and Cheese Social)

Trout and Keg Feast - \$6.00 (children free, soft drinks available)

Make checks payable to Jeff Neff (NCGS) and send to:

Jeff Neff  
Department of Earth Sciences  
Western Carolina University  
Cullowhee, N.C. 28723  
Telephone 704-227-7268

-----DETACH

Name \_\_\_\_\_

ADDRESS \_\_\_\_\_

PHONE \_\_\_\_\_

Attending Trout/Keg Feast on Friday evening? \_\_\_\_\_ Yes \_\_\_\_\_ No

Participating in Field Trip? \_\_\_\_\_ Yes \_\_\_\_\_ No  
How many? \_\_\_\_\_

How many? \_\_\_\_\_



ANNOUNCEMENTS

East Carolina University Costa Rica Program 1981 January 17 - April 16, 1981

The ECU Campus in Costa Rica provides an opportunity for American students to complete a semester of study in a Latin American environment. Courses to be offered are Field Study of Costa Rica, Social Sciences, Science, Humanities, and Conversational Spanish.

For information contact: Dr. Robert E. Cramer, Department of Geography, East Carolina University, Greenville, N.C. 27834.

RESEARCH AND PUBLICATIONS

Information on research and publications supplied for the Spring, 1980, Newsletter was omitted because of space constraints. We are, therefore, devoting most of the Fall 1980 Newsletter to information on recent research and publications by North Carolina geographers. If information from your department was not furnished for this newsletter, we will be glad to publish it in the next issue.

APPALACHIAN STATE UNIVERSITY

Imperatore, William and Hoy, Don, Student Supplement for Essentials of Geography and Development: Concepts and Processes, New York: MacMillan, 1980.

EAST CAROLINA UNIVERSITY

Leahy Palmyra, and Cramer, Robert E., Map Interpretation, Greenville, N.C.: National Printing Company, 1980.

Stephenson, Richard, "The Urban Physical Environment," Chapter 9, pp. 164-184 in Hartshorn, Truman A., Interpreting the City: An Urban Geography, New York: John Wiley & Sons, 1980.

Leahy, Edward, "The Yaguas of Salco, Peru," The Explorer's Journal, December, 1979.

Wubneh, Mulatu, "A Profile of the Florida A & M University Graduates," published by Florida A & M University, November, 1979.

Wes Hankins, Mulatu Wubneh and Robert Keber (Pembroke State) received a grant of \$1320 from the Association of Collegiate Schools of Planning to develop the "Undergraduate Guide to Planning Education."

Philip Shea received a grant of \$879 from ECU Research Committee for research on "The Spatial Relationships of Mainland United States Sugar Cane Production, 1960-1978."

Simon Baker received a grant of \$15,995 from the U.S. Geological Survey for research on "A User Oriented Level III Land Use and Data Analysis Classification of the North Carolina Barrier Island System."

Richard Stephenson and Edward Leahy received a grant of \$51,557 from NSF for research on "The Impact of a Growth Center."

PEMBROKE STATE UNIVERSITY

Ross, Tom, "An Alternative to Chemical Pesticides?" in Mazingira 11, Oct., 1979.

"Maintenance of a Contrasting Land Cover Pattern on the Northern Virginia Piedmont," accepted for publication by Habitat International.

Keber, Robert, and Keber, Helen, "Participation in the Food Stamp Program: Effects of Outreach," in Proceedings of the UNC Urban Affairs Conference, 1979.

Tom Ross has received a Faculty Development Grant and funding from the Southern Research Education Board to investigate soil trace elements and cancer in North Carolina.



Robert Keber has received a Faculty Development Grant and is exploring criteria for establishing areas of environmental concern in mountainous regions.

UNIVERSITY OF NORTH CAROLINA AT CHAPEL HILL

Birdsall, Stephen S., Hallman, Shannon and Kopec, Richard, North Carolina Atlas of the Elderly, UNC-CH Department of Geography, Studies in Geography No. 13, 1979.

Birdsall, Stephen S., "Planning Urban Service Locations for the Elderly," in Golant, Stephen M. (Ed.), Location and Environment of Elderly Population.

Meade, Melinda, "Cardiovascular Mortality in the Southeastern United States: the Coastal Plain Enigma," Social Science Medicine, 1979, 257-265.

Robinson, Peter J., "The Availability of Solar Energy in North Carolina," Energy Institute, Research Triangle Park, N.C., March, 1980, 100pp.

UNIVERSITY OF NORTH CAROLINA AT GREENSBORO

Bennett, D. Gordon and Gade, Ole, Geographic Perspectives in Migration Research: A Bibliographical Survey, Chapel Hill: University of North Carolina, Department of Geography, Studies in Geography, 1979.

D. Gordon Bennett is currently editing the book Tension Areas in World Affairs for Park Press.

WESTERN CAROLINA UNIVERSITY

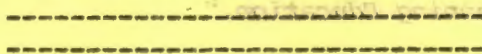
White, Gary and West, J., "Problem Analysis of Nonpoint Source Pollution in the Blue Ridge Physiographic Province," at printer.

White, Gary, "Watershed Management Report of the Resource Conservation and Utilization Project," Final Report, U.S.A.I.S., 1979.

"Rock Glacier Morphometry, San Juan Mountains, Colorado," Geological Society of America Bulletin, Vol. 90 (June, 1979), pp. 515-518.

Gary White is currently involved in research on erosion in Nepal.

Gary White and J. West are carrying out sediment studies in small rivers of the Southern Blue Ridge.



Philip Keber received a grant of \$275 from the UNC Research Committee for research on "The Spatial Relationship of Mountain United States Sugar Cane Production, 1860-1970."

Richard Keber received a grant of \$1,250 from the U.S. Geological Survey for research on "A User Oriented Level III Land Use and Data Analysis Classification of the North Carolina Barrier Islands Region."

Richard Stephenson and Albert Leiby received a grant of \$1,250 from the UNC Research Committee for research on "The Impact of a Growth Center."

Stephenson, Richard, "The Relationship of Chemical Weathering to Chemical Weathering," in Geological Society of America Bulletin, Vol. 90, Dec., 1979.

Stephenson, Richard, "The Relationship of a Transiting Land Cover Pattern on the Mountainous Virginia Piedmont," accepted for publication by Biological Conservation.

Stephenson, Richard, and Leiby, Albert, "Participation in the Food Stamp Program: Effects of Outcomes," in Proceedings of the 1978 Urban Alliance Conference, 1978.

Stephenson, Richard, "The Impact of a Growth Center," in Proceedings of the 1978 Urban Alliance Conference, 1978.